



Easy Chess Puzzle # 0103

By

G Bud Games
<https://gbud.in>

January 12, 2022

Contents

Easy Chess puzzle # 0103 - Gain opponent's queen	3
Easy chess puzzle 0103	3
Solution to easy chess puzzle 0103	4
Solution 1	4
Right moves for the solution to the easy chess puzzle 0103	7
Explanation for the moves	7
Categories of easy chess puzzle 0103	7
easy chess puzzle 0103 chart	8
How to view the solution to easy chess puzzle 0103	10
How to get help for moves in the easy chess puzzle 0103	11
Play chess for free	12

List of Figures

1	Solve this easy chess puzzle 0103. Gain opponent's queen @ https://gbud.in/g77s6r1	3	
2	Solve this chess puzzle online with solution @ https://gbud.in/g77s6r1	3	
3	Initial board position of easy chess puzzle 0103	4	
4	Qf3	5	
5	Rxg3+	5	
6	Kxh2	6	
7	Rxf3	6	
8	easy chess puzzle 103 chart 1	8	
9	easy chess puzzle 103 chart 2	9	
10	easy chess puzzle 103 chart 3	9	
11	easy chess puzzle 103 chart 4	10	
12	Click the solution button to view solutions @ https://gbud.in/g77s6r1	10	
13	Click the help button to get help on next move @ https://gbud.in/g77s6r1	11	
14	Solve more easy puzzles @ https://gbud.in/chsezpz	11	
15	Solve other puzzles @ https://gbud.in/chsgppz	11	
16	Play chess online for free. Solve puzzles and play with friends	12	
17	Solve this puzzle online by scanning this QR code or go to the link below	13	

Easy Chess puzzle # 0103 - Gain opponent's queen

Solve this easy chess puzzle and improve your chess games through improvement of your chess strategies and chess tactics.

Puzzle No : 0103

Difficulty level : Easy

Description : Gain opponent's queen

Next Move : White

Player level : Beginner

Short URL for puzzle : <https://gbud.in/g77s6r1>

Easy chess puzzle 0103

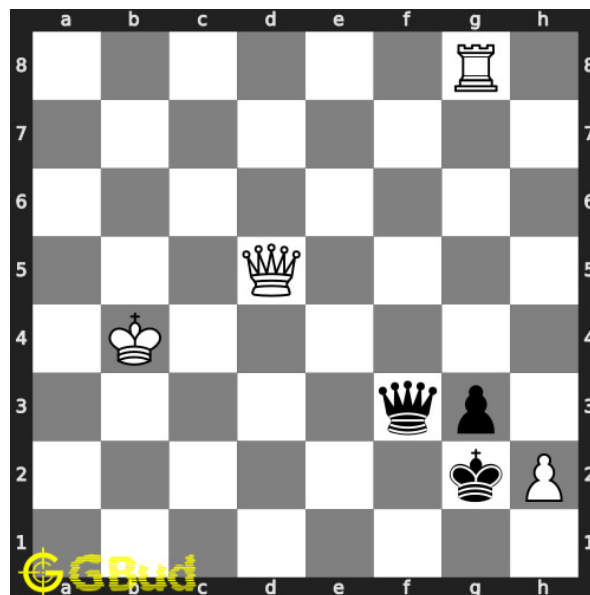


Figure 1: Solve this easy chess puzzle 0103. Gain opponent's queen @ <https://gbud.in/g77s6r1>



Figure 2: Solve this chess puzzle online with solution @ <https://gbud.in/g77s6r1>

Dont forget to check out [chess puzzles](#), [easy chess puzzles](#), [medium chess puzzles](#), [hard chess puzzles](#) and [chess puzzles collections](#) .

Solution to easy chess puzzle 0103

At this puzzle, next [move](#) is by [White](#). The objective of the puzzle is to gain opponent's queen.

See the interactive solution at the [puzzle page](#)

Solution 1

Initial board position This is the initial board position of easy chess puzzle 0103.

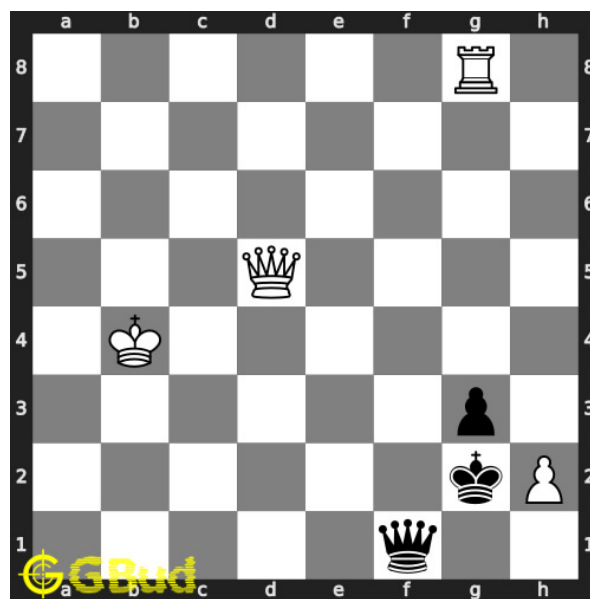


Figure 3: Initial board position of easy chess puzzle 0103

Move 1 Move by black

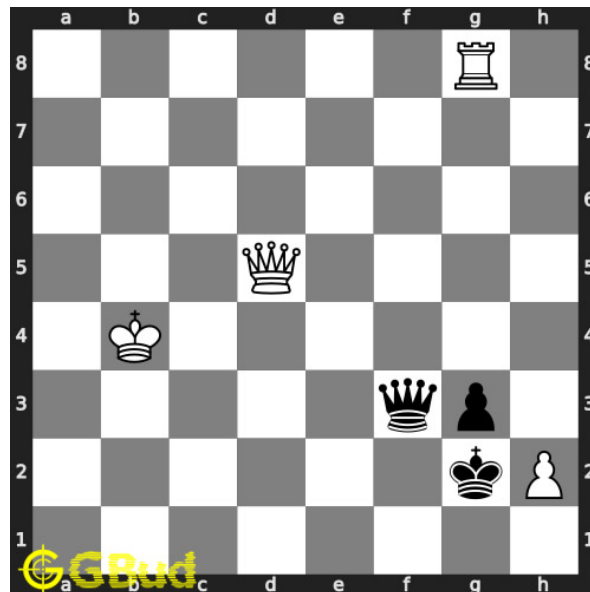


Figure 4: Qf3

opponent's queen moves to f3 and blocks the check threat from your hanging queen.

Move 2 Move by white

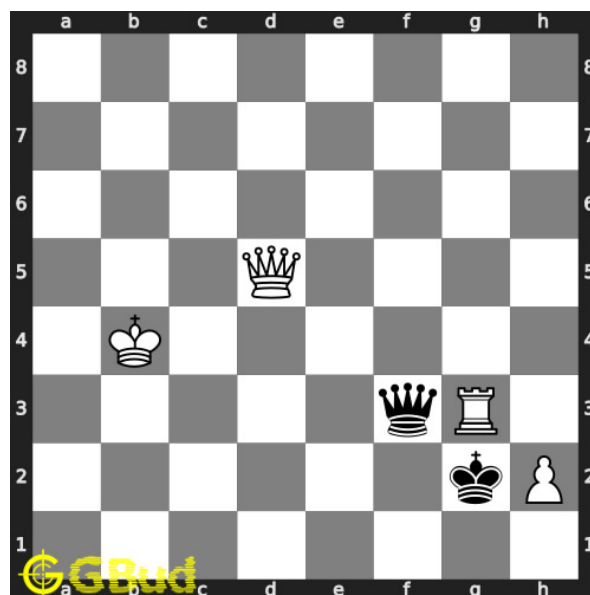


Figure 5: Rxg3+

your rook captures pawn and gives check to opponent. your rook now forks opponent's king and queen

Move 3 Move by black

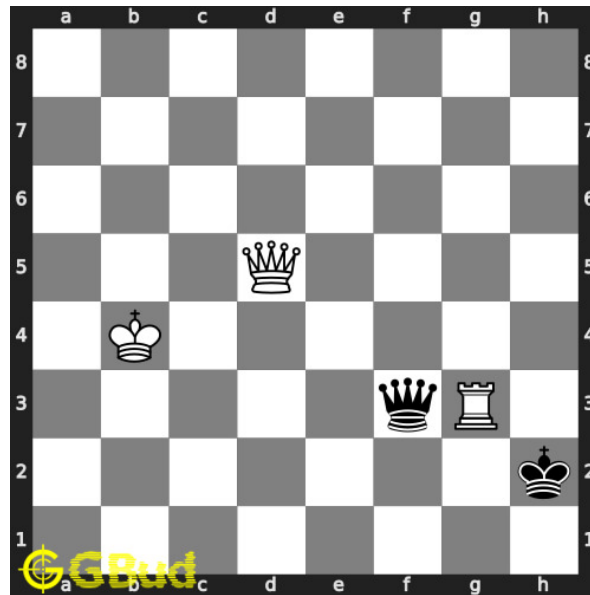


Figure 6: Kxh2

opponent's king captures your hanging pawn. they can't capture your rook by the queen as it is pinned to their king.

Move 4 Move by white

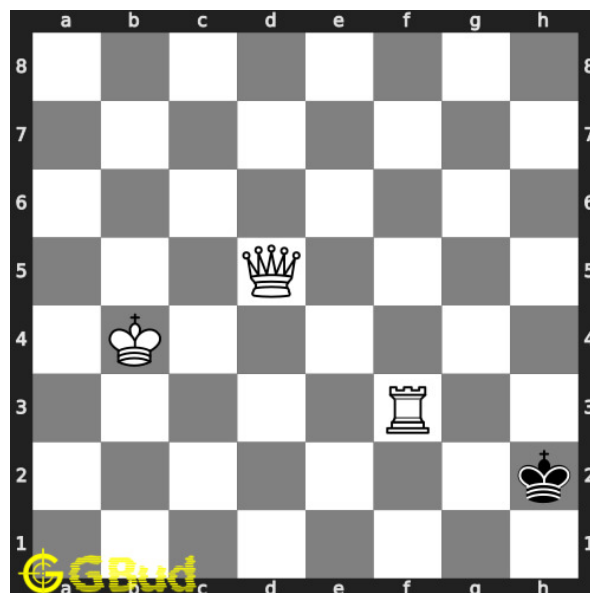


Figure 7: Rxf3

your rook captures opponents hanging queen since the support to their queen is lost.. this is how you can gain opponent's queen.

Right moves for the solution to the easy chess puzzle 0103

Based on the objective of the puzzle, you have to make the right moves. Following are the right moves

1. Rxc3+, Rxf3

Explanation for the moves

1. Qf3 - Opponent's queen moves to f3 and blocks the check threat from your hanging queen.
2. Rxc3+ - Your rook captures pawn and gives check to opponent. Your rook now forks opponent's king and queen
3. Kxh2 - Opponent's king captures your hanging pawn. They can't capture your rook by the queen as it is pinned to their king.
4. Rxf3 - Your rook captures opponents hanging queen since the support to their queen is lost.. This is how you can gain opponent's queen.
5. For right move - You gained the queen after removing support to it through a fork. Keep up the good work
6. For wrong move - You underestimated the power of pin and fork. Do not give up.

Categories of easy chess puzzle 0103

This easy chess puzzle falls in these categories.

1. [Easy chess puzzles](#)
2. [Gain puzzles in chess](#)
3. [Fork puzzles in chess](#)
4. [Strategy puzzles in chess](#)
5. [Pin puzzles in chess](#)
6. [Rook puzzles in chess](#)

easy chess puzzle 0103 chart



Figure 8: easy chess puzzle 103 chart 1



Figure 9: easy chess puzzle 103 chart 2



Figure 10: easy chess puzzle 103 chart 3



Figure 11: easy chess puzzle 103 chart 4

How to view the solution to easy chess puzzle 0103

To view the [solution to this puzzle](#), follow the steps given below

1. Go to the [puzzle page](#)
2. Click the solution button (Key as shown [below](#)) to view the solution



Figure 12: Click the solution button to view solutions @ <https://gbud.in/g77s6r1>

How to get help for moves in the easy chess puzzle 0103

To get help or the possible next moves in the puzzle, , follow the steps given below

1. Go to the [puzzle page](#)
2. Click the help button (exclamation mark as shown [below](#)) to get help or suggestion on next possible [move](#)



Figure 13: Click the help button to get help on next move @ <https://gbud.in/g77s6r1>



Figure 14: Solve more easy puzzles @ <https://gbud.in/chsezpz>



Figure 15: Solve other puzzles @ <https://gbud.in/chsgppz>

Play chess for free

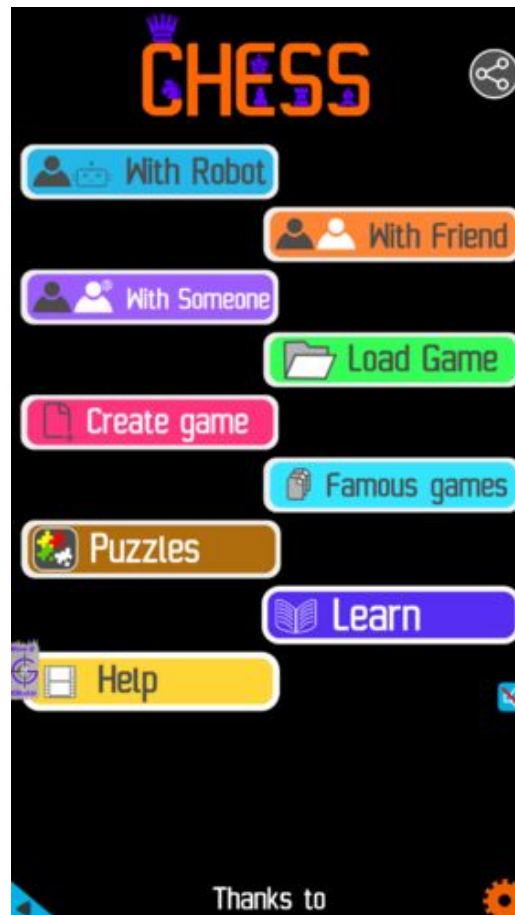


Figure 16: Play chess online for free. Solve puzzles and play with friends

Play chess for free at <https://gbud.in/chs>

We present you a platform to play chess online with friends for free. No need to install any app. You can play chess for free without registration or login.

Simple. You can do several chess related activities.

1. [solve chess puzzles](#)
2. [learn about chess](#)
3. [play chess with computer](#)
4. [play chess with friend](#)
5. [create your own chess games](#)

6. [fen viewer](#)
7. [fen editor](#)
8. [fen generator](#)
9. [pgn viewer](#)
10. [chess board editor](#)
11. [view famous chess games.](#)



Figure 17: Solve this puzzle online by scanning this QR code or go to the link below

<https://gbud.in/g77s6r1>

Read the latest article on Easy Chess puzzle # 0103 - Gain opponent's queen by scanning this QR code or click the link

Previous article : « [Easy Chess puzzle # 0102 - Mate in 1 move](#)

Next article : [Easy chess puzzles](#) »

[Back to top](#)

[Contact Us](#)